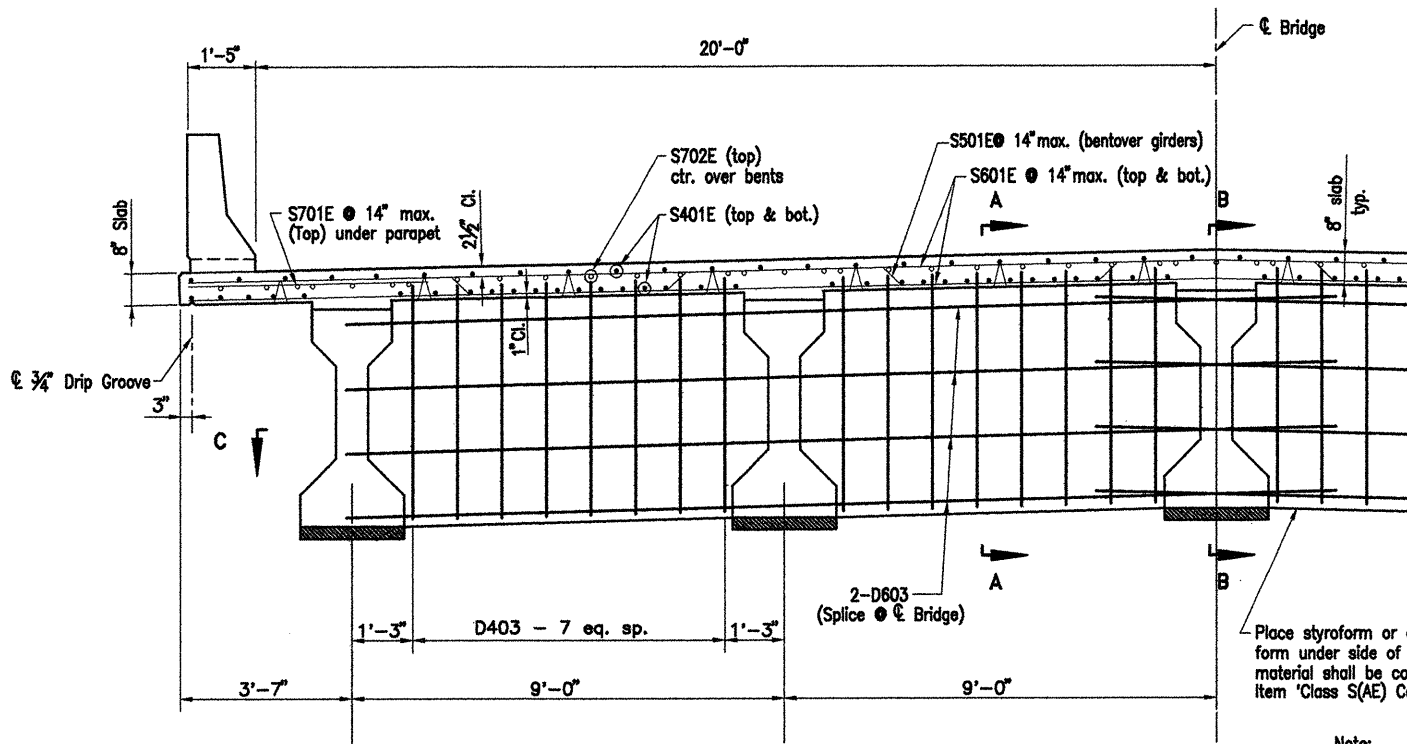


COMPANY\1999 JOBS\99-044 AHTD\WHITERIVER\JOB 110394\368crossec2.dwt ACAD SCALE: 1/2"=1'-0"

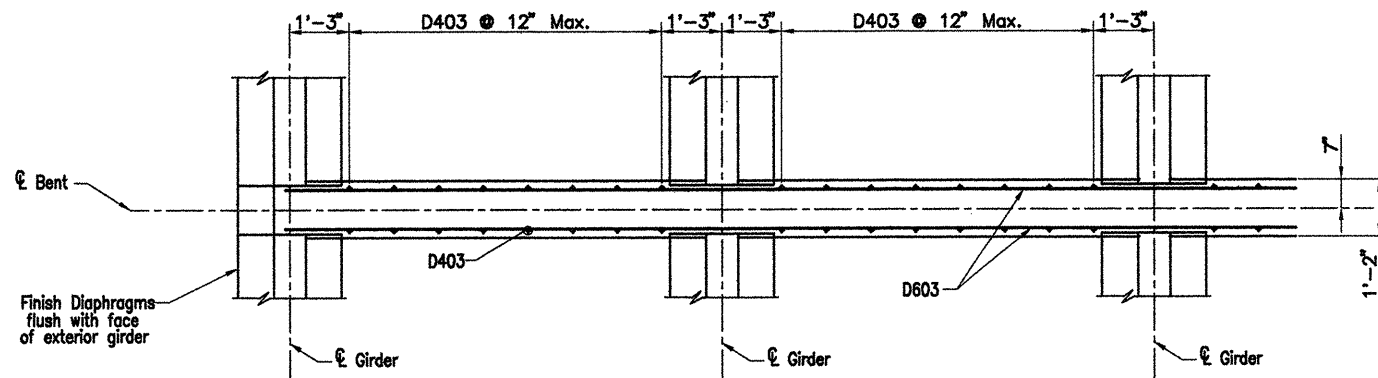


TYPICAL PART SECTION
AT CONTINUOUS DIAPHRAGM BETWEEN ENDS OF GIRDERS
AT FIXED JOINT

Note:
The Superstructure details shown are for use when removable deck forming is used and are the basis for measurement of Class S(AE) Concrete. See Standard Dwg. No. 14991 for allowable modifications and for tolerances when Permanent Deck Forming is used.

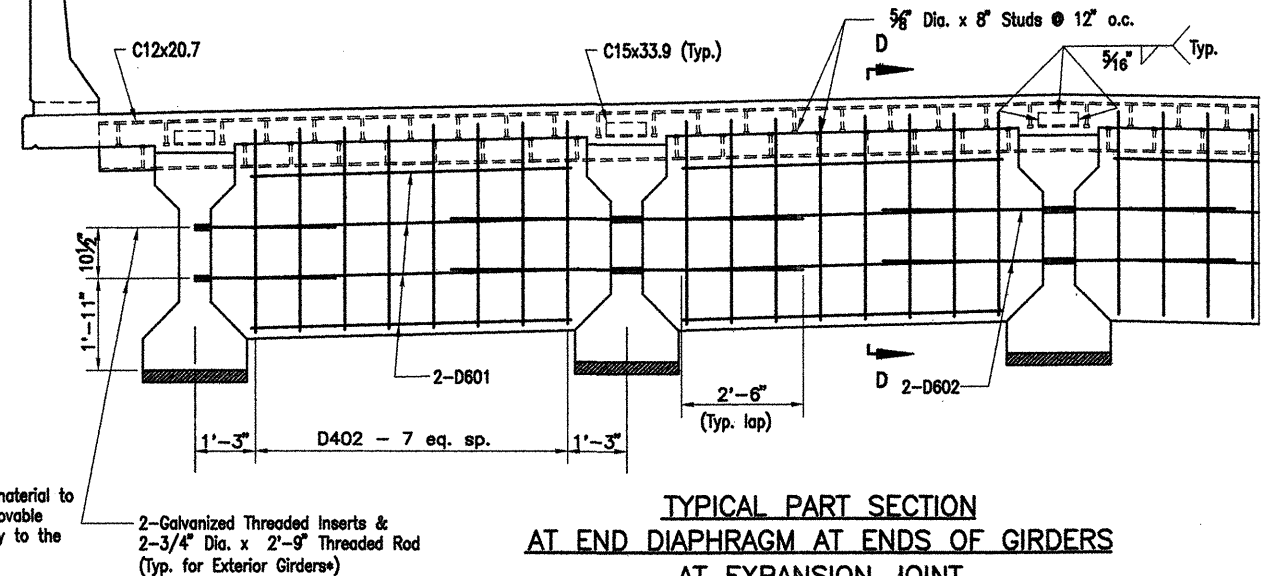
SLAB REINFORCING

Transverse: S501E @ 14" o.c. max. bent up over girders
S601E @ 14" o.c. max. in top and bottom
S701E @ 14" o.c. max. in top at parapet
Longitudinal: S401E in top and bottom (Placed as shown)



SECTION C-C
Scale: 1/2" = 1'-0"

* Galvanized Threaded Inserts & 3/4" Dia. Threaded Rods to be AASHTO M270, Gr. 36. (Non-Pay Item subsidiary to the item 'Prestressed Concrete Girders'. Galvanizing shall be in accordance with AASHTO M232

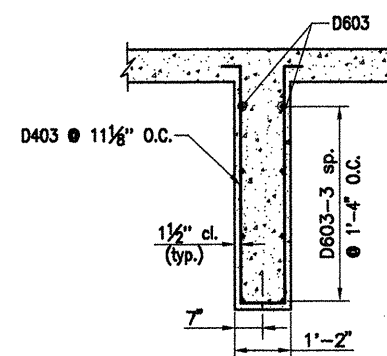


TYPICAL PART SECTION
AT END DIAPHRAGM AT ENDS OF GIRDERS
AT EXPANSION JOINT

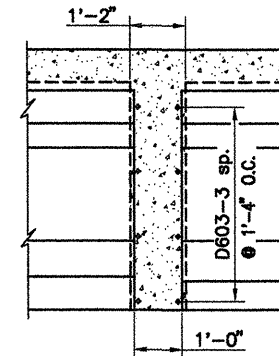
PARAPET REINFORCING

For placing of parapet reinforcing see dwg. 42005.

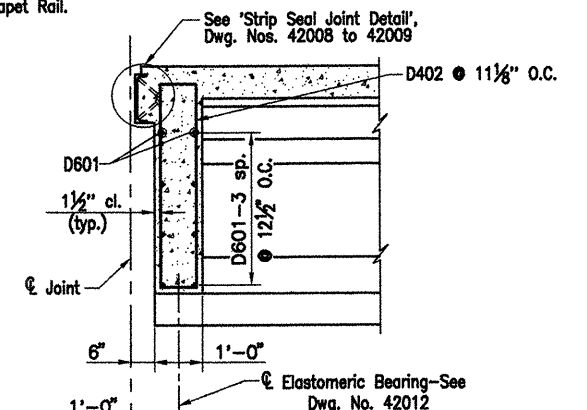
Note: Class I Protective Surface Treatment shall be applied to the Roadway Surface and to the Face and Top of the Concrete Parapet Rail.



SECTION A-A
Scale: 1/2" = 1'-0"



SECTION B-B
Scale: 1/2" = 1'-0"



SECTION D-D
Scale: 1/2" = 1'-0"

ALTERNATE NO. 1
WHITE RIVER BRIDGE APPROACHES

DETAILS OF 368'-0" CONT.
PRESTRESSED CONCRETE GIRDER UNIT
(SHEET 3 OF 7)

WHITE RIVER STR. & APPRS.
(CLARENDON) (PH. II) (F)
MONROE COUNTY

ROUTE 79 SEC. 13

ARKANSAS STATE HIGHWAY COMMISSION
LITTLE ROCK, ARK.

Engstrom/Modjeski and Masters, Inc.

DRAWN BY: YO DATE: Nov. 07 FILENAME: b11039412_s03
CHECKED BY: GPT DATE: Nov. 01 SCALE: 1/2" = 1'-0"
DESIGNED BY: YO DATE: Nov. 01
BRIDGE NO. 06830 DRAWING NO. 42003

BRIDGE ENGINEER

